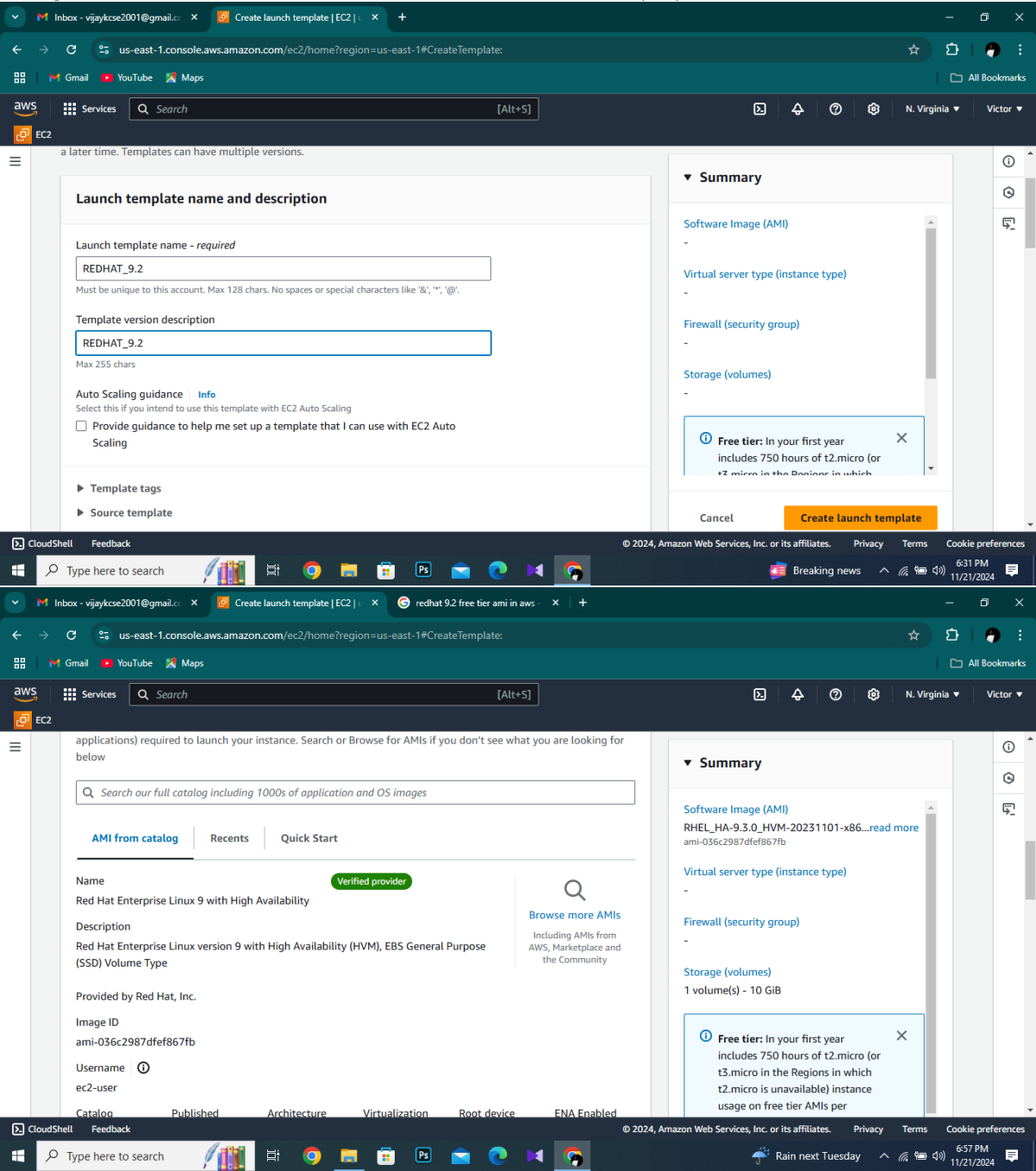
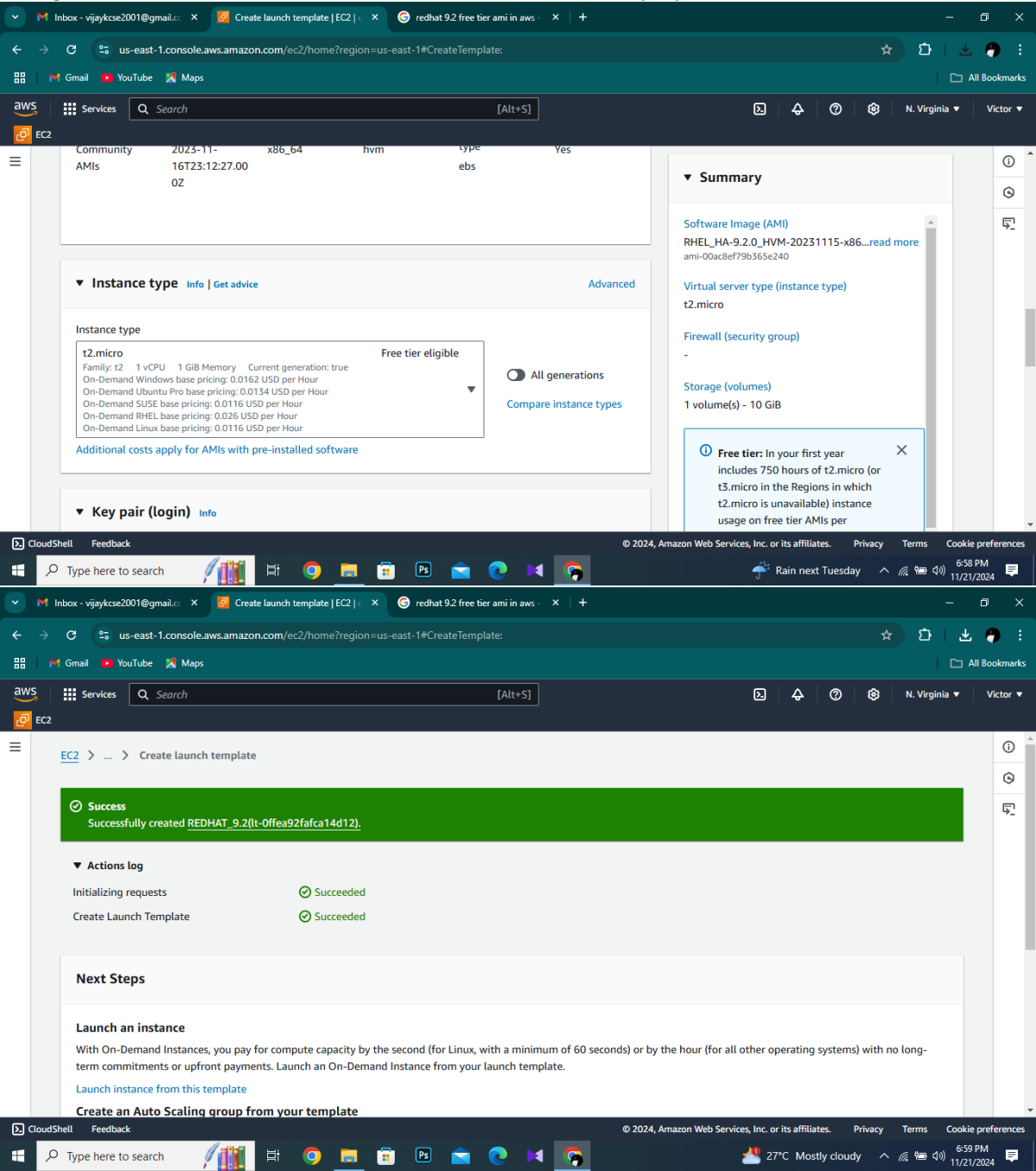


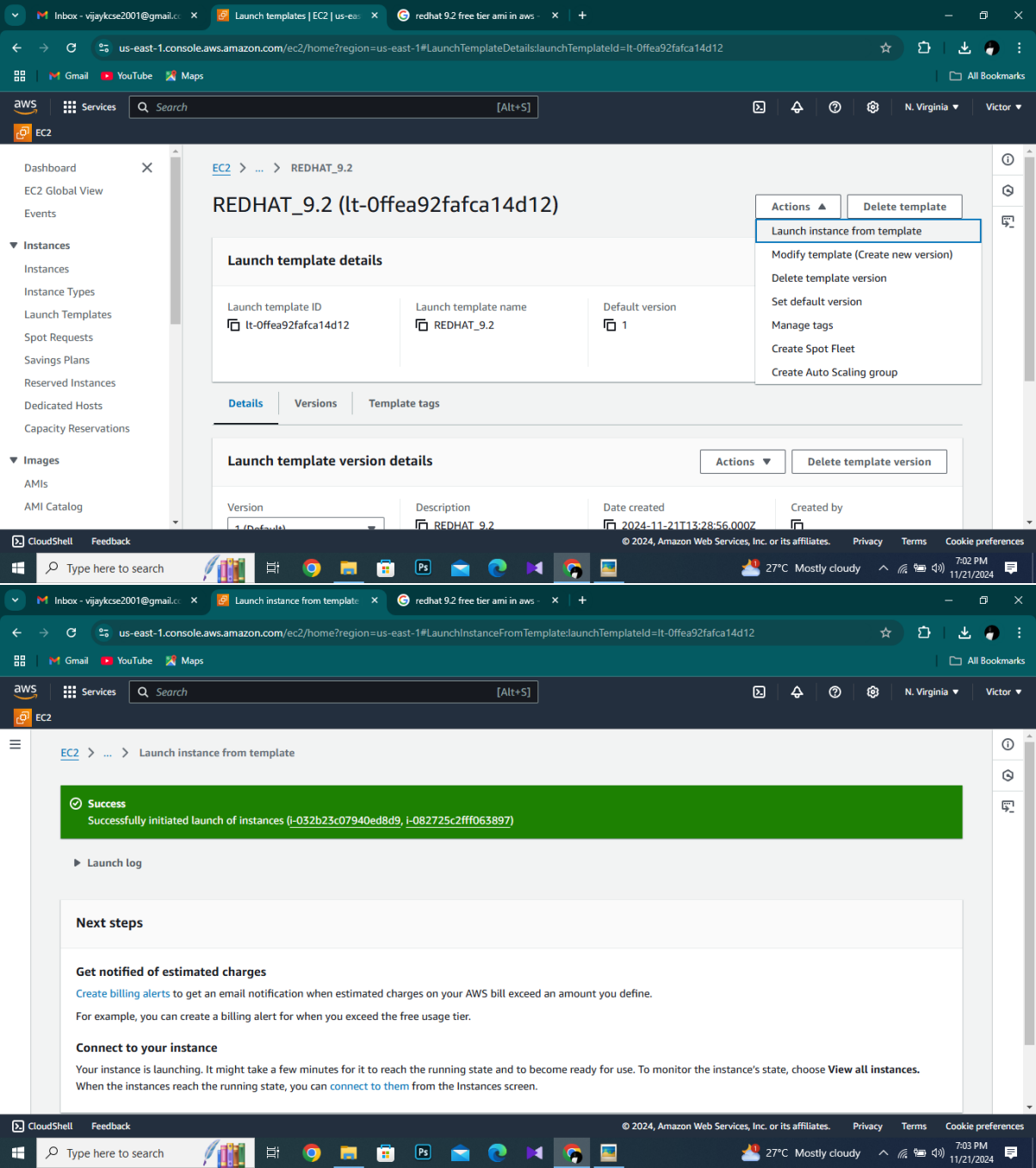
Proficient in creating and deploying EC2 launch templates tailored to client requirements, optimizing instance provisioning with essential software packages, and generating custom AMIs from configured instances to ensure efficient and scalable future deployments.



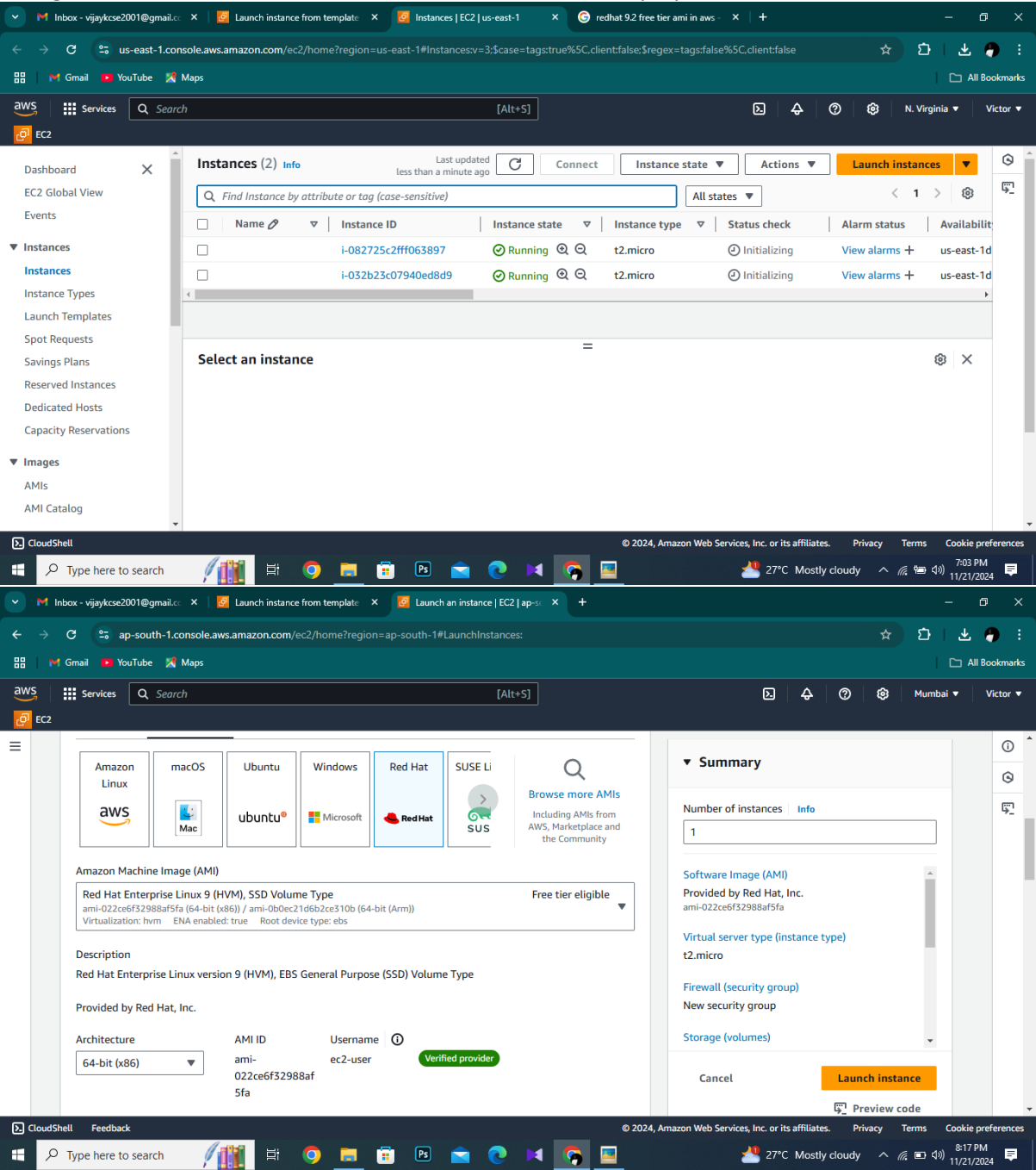
Proficient in creating and deploying EC2 launch templates tailored to client requirements, optimizing instance provisioning with essential software packages, and generating custom AMIs from configured instances to ensure efficient and scalable future deployments.



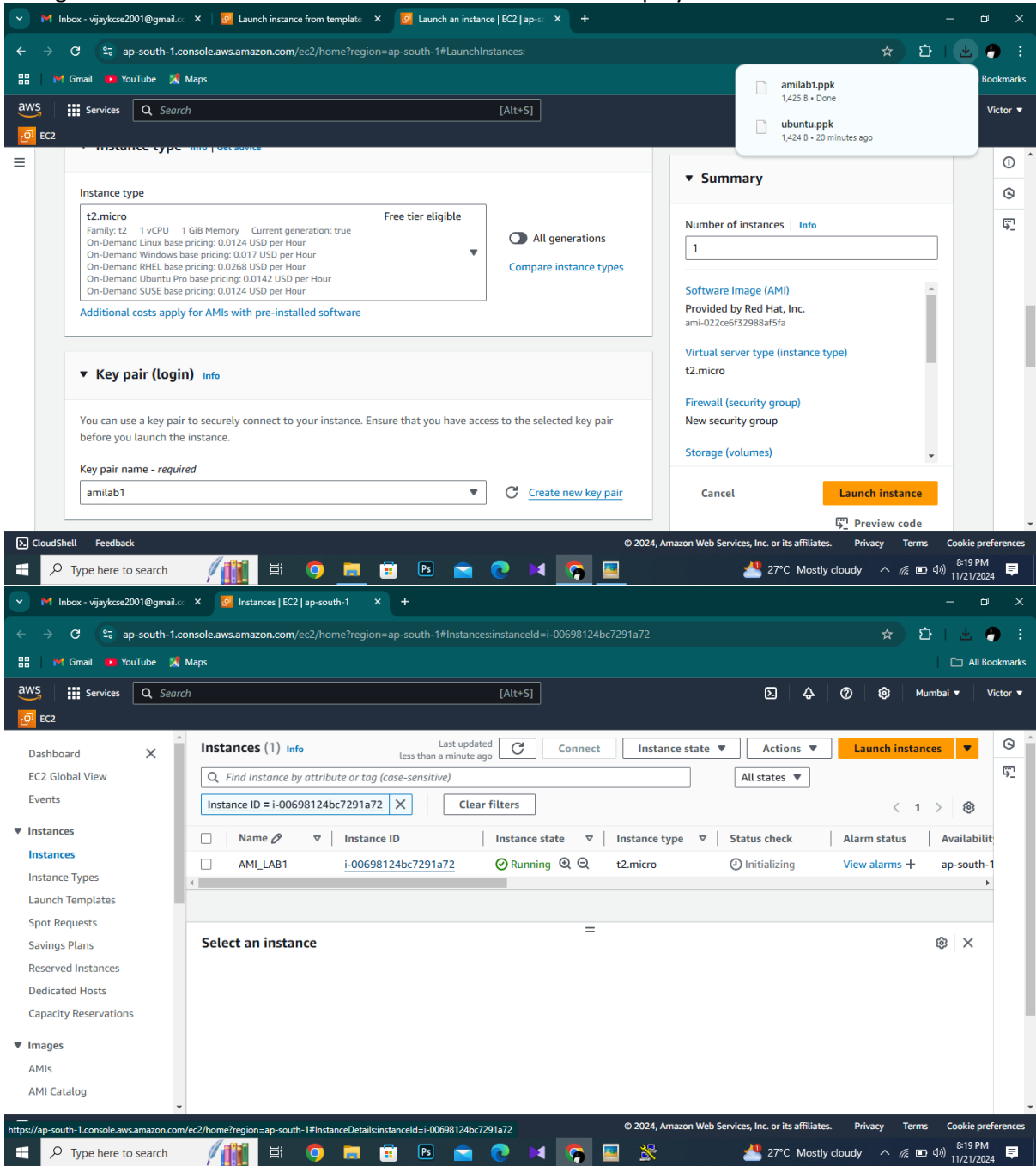
Proficient in creating and deploying EC2 launch templates tailored to client requirements, optimizing instance provisioning with essential software packages, and generating custom AMIs from configured instances to ensure efficient and scalable future deployments.



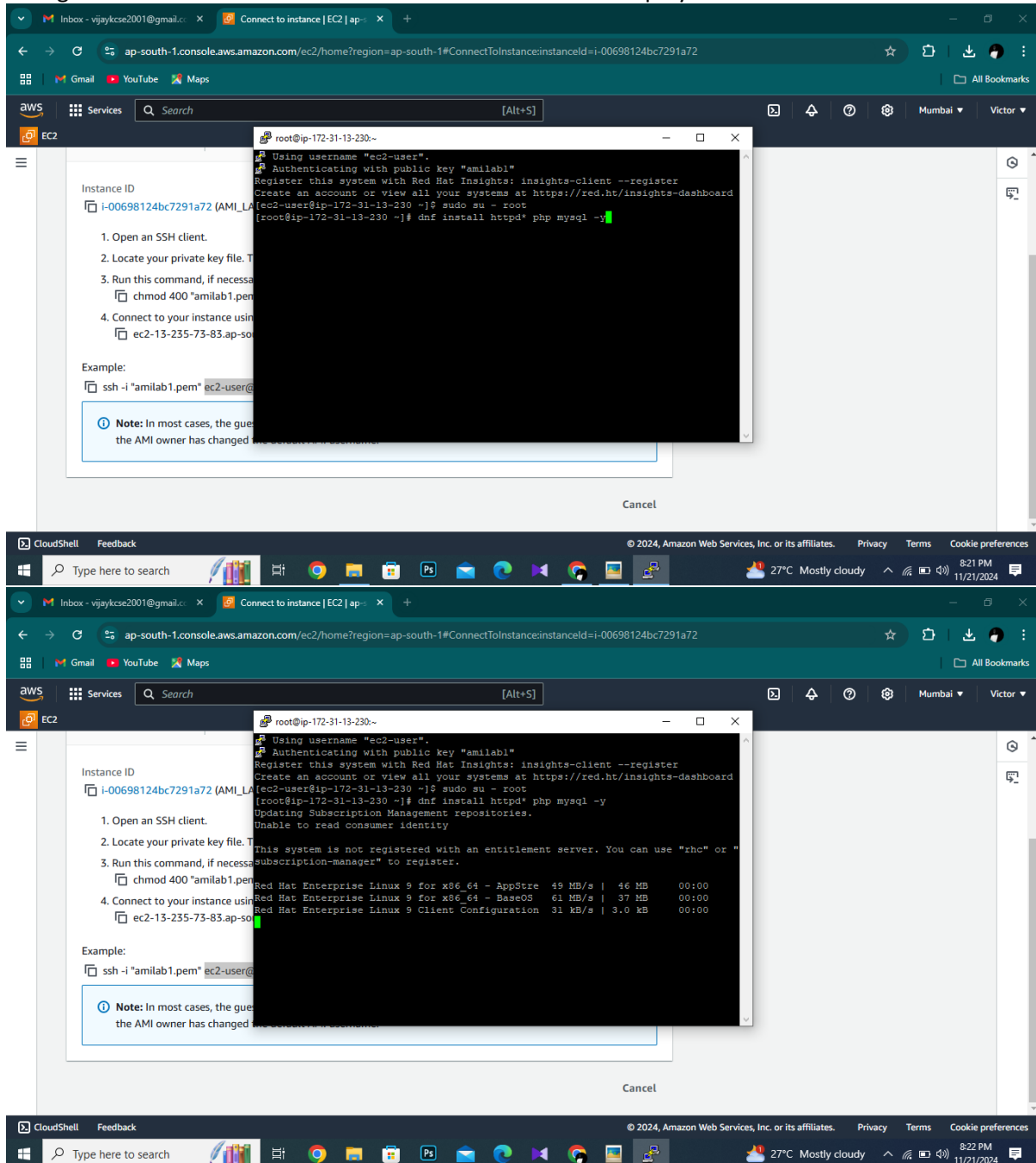
Proficient in creating and deploying EC2 launch templates tailored to client requirements, optimizing instance provisioning with essential software packages, and generating custom AMIs from configured instances to ensure efficient and scalable future deployments.



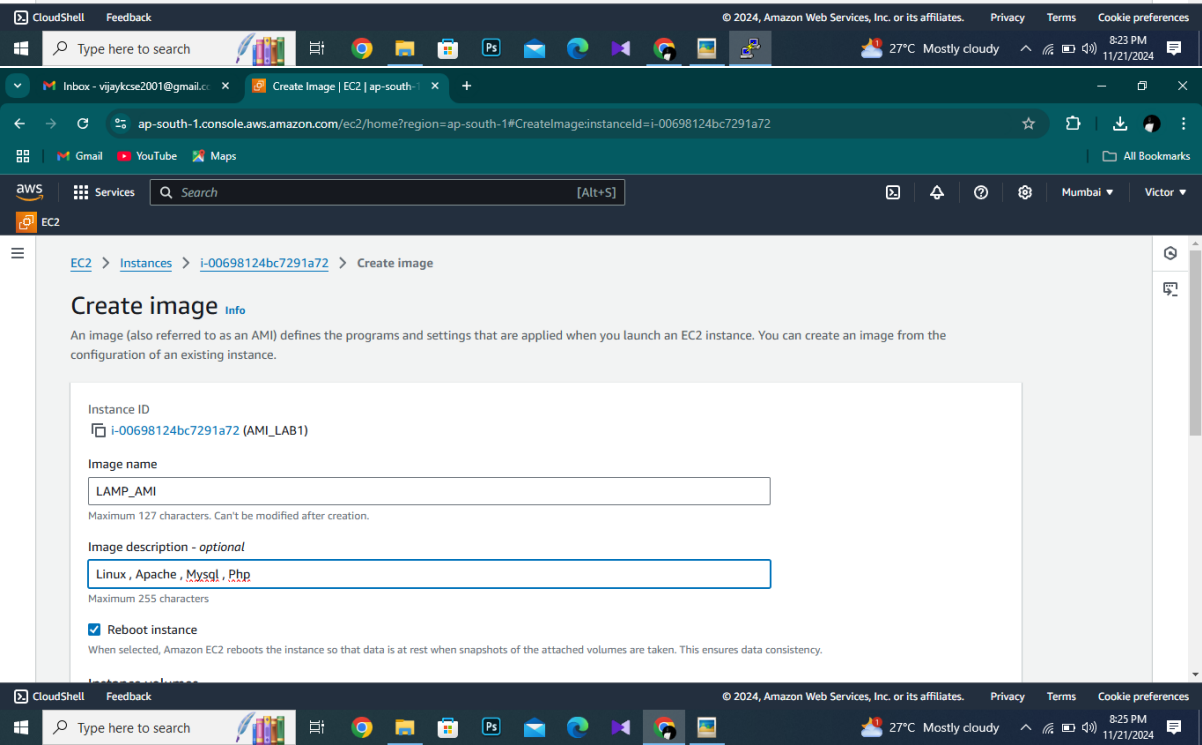
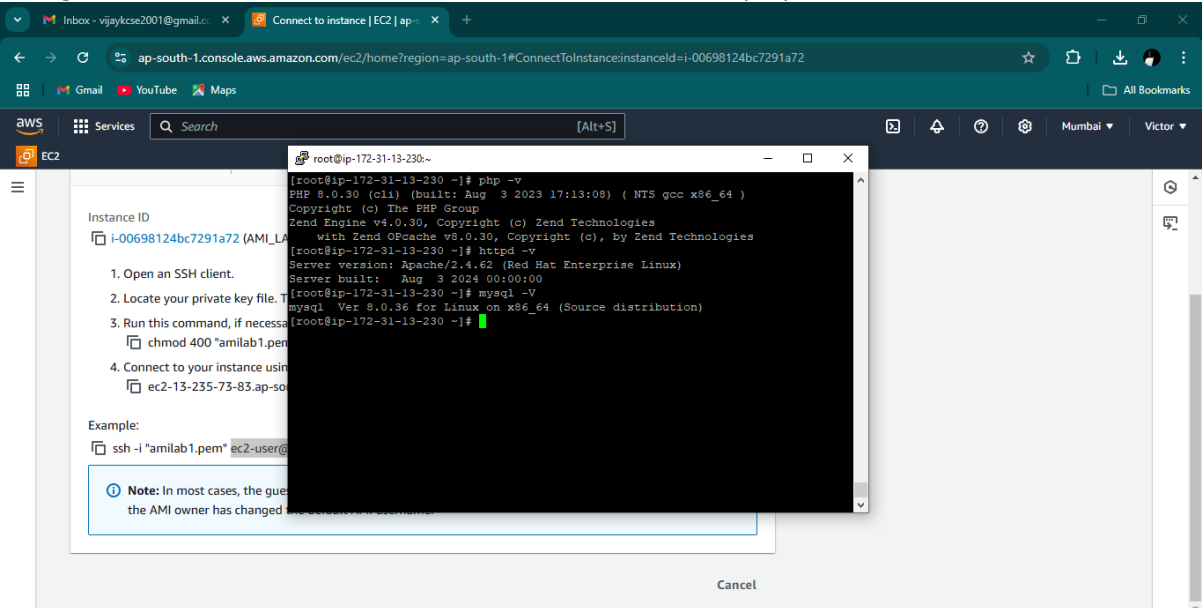
Proficient in creating and deploying EC2 launch templates tailored to client requirements, optimizing instance provisioning with essential software packages, and generating custom AMIs from configured instances to ensure efficient and scalable future deployments.



Proficient in creating and deploying EC2 launch templates tailored to client requirements, optimizing instance provisioning with essential software packages, and generating custom AMIs from configured instances to ensure efficient and scalable future deployments.



Proficient in creating and deploying EC2 launch templates tailored to client requirements, optimizing instance provisioning with essential software packages, and generating custom AMIs from configured instances to ensure efficient and scalable future deployments.



Proficient in creating and deploying EC2 launch templates tailored to client requirements, optimizing instance provisioning with essential software packages, and generating custom AMIs from configured instances to ensure efficient and scalable future deployments.

